





CUPA 17

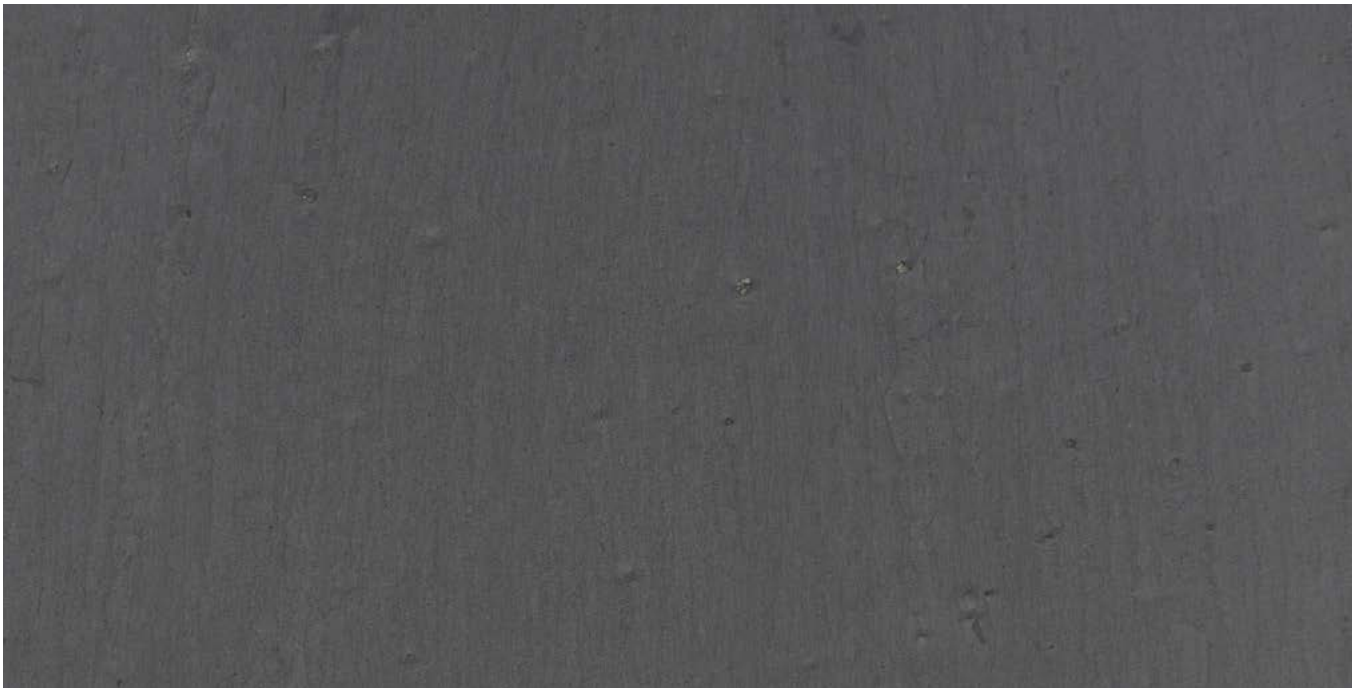
*Non-carbonated slate formed by tectonic compression.
Blue black slate with non rusting metallic particles
and thin laminations.*



 Quarry Rozadais. Carballeda de Valdeorras (Ourense), Spain.

 Operating since 1960.

 Sizes: 25x15 - 50x45 cm
Thickness: 3.5 - 4.5 - 7.5 mm



Formats



Rectangular Bullnose Rhomboid Ogival Innova

Selections



Technical specifications

ABSORPTION	CARBONATE NON CARBONATED	MOR CHARACTERISTIC	SO ₂ EXPOSURE TEST	THERMAL CYCLE TEST	FREEZE THAW TEST
0,28% Code : W1 (< 0,4%)	0,62% Complies (< 1,5%)	Longitudinal 51,3 MPA Transverse 43 MPA	S1	T1	Fullfil < 0,6%

International certifications



European Standard: EN 12326 | French Specifications: NF 08/01 N° 24945 | Belgian Specifications: ATG H657